



## THE CORAL

**The outdoor alfresco is the feature of the Coral's innovative design.** Centrally located and linked to both the master bedroom and kitchen areas; the alfresco would make the perfect space for entertaining, or to create your own private zen-inspired area to relax.

The Coral's spacious open-plan study and living areas are overlooked by a traditional style kitchen. The master bedroom, bathroom and laundry are conveniently located at the rear of the home, and the laundry offers access to outdoor areas.

The skillion roof is an aesthetically appealing addition to the Coral's modern design.

- 1 Bedroom x 1 bathroom
- Open study
- Traditional style kitchen with quality appliances
- Modern fixtures and fittings
- Various internal finishings available
- Contemporary or traditional finishes to exterior and interior available
- Outdoor alfresco area on slab
- Single carport

***Just imagine living with a stunning seascape on your doorstep! We can help you bring your imagination to life with a brand new home site at Sunset Beach Lifestyle Village.***

**Sunset Beach Lifestyle Village**

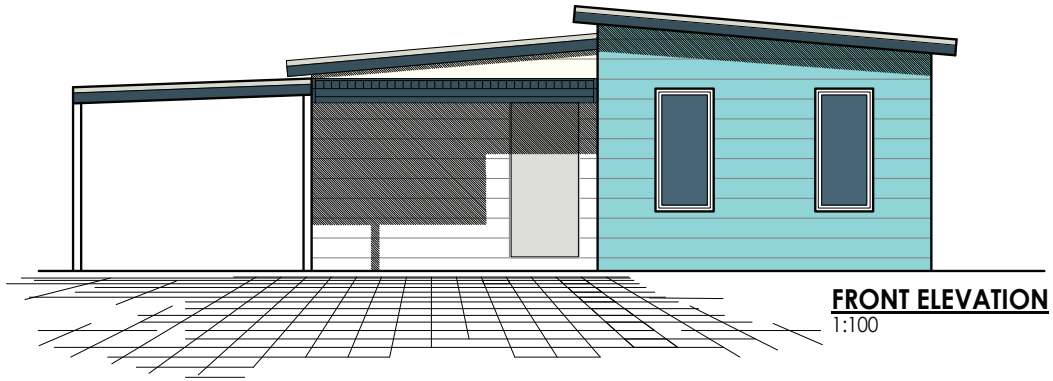
4 Bosley St

Sunset Beach WA 6530

Office: 08 9920 4111 / Mobile: 0412 991 442

**FLEETWOOD**  
AUSTRALIA

[www.sunsetbeachvillage.com.au](http://www.sunsetbeachvillage.com.au)



**FRONT ELEVATION**  
1:100



**AREAS**

HOUSE AREA:	83.0m <sup>2</sup>
ALFRESCO:	10.1m <sup>2</sup>
VERANDAH:	4.3m <sup>2</sup>
CARPORT:	18.0m <sup>2</sup>
<b>TOTAL AREA:</b>	<b>115.4m<sup>2</sup></b>
SLAB 1 (LENGTH x WIDTH):	11.1m x 3.6m
SLAB 2 (LENGTH x WIDTH):	13.7m x 4.2m

**CEILING HEIGHTS** @ 2410mm  
UNLESS OTHERWISE NOTED

**FLOOR PLAN**

1:100

