



## THE WILDFLOWER

**The Wildflower is a modern two bedroom home, designed to feel spacious and inviting.** The galley style kitchen is central to the Wildflower's spacious dining and living areas which open to the rear outdoor alfresco area providing the perfect space to relax or entertain guests.

The master bedroom features a private ensuite and walk in robe. A second full-size bathroom is adjacent to the second bedroom which has a large built in robe. The laundry is conveniently located behind the kitchen area, offering direct access to the carport.

- 2 Bedrooms x 2 bathrooms
- Open central floor plan with an alfresco off the living room
- Walk-in robe in master bedroom
- Galley style kitchen with quality appliances
- Quality floor coverings and window treatments
- Modern fixtures and fittings
- Internal and external painting
- Single carport

*Just imagine living with a stunning seascape on your doorstep! We can help you bring your imagination to life with a brand new home site at Sunset Beach Lifestyle Village.*

**Sunset Beach Lifestyle Village**

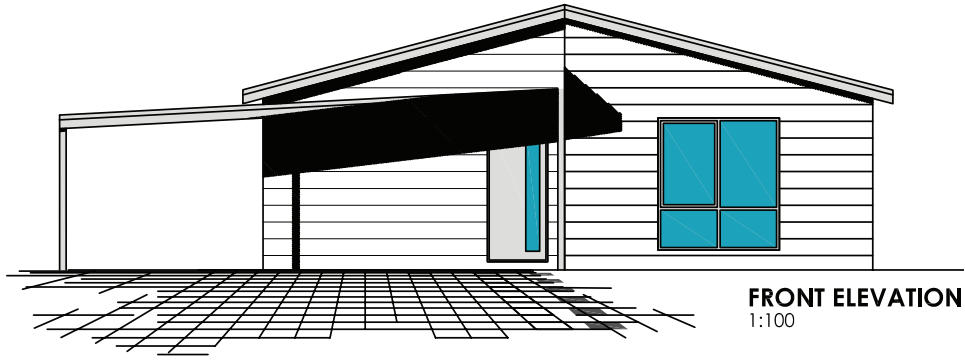
4 Bosley St

Sunset Beach WA 6530

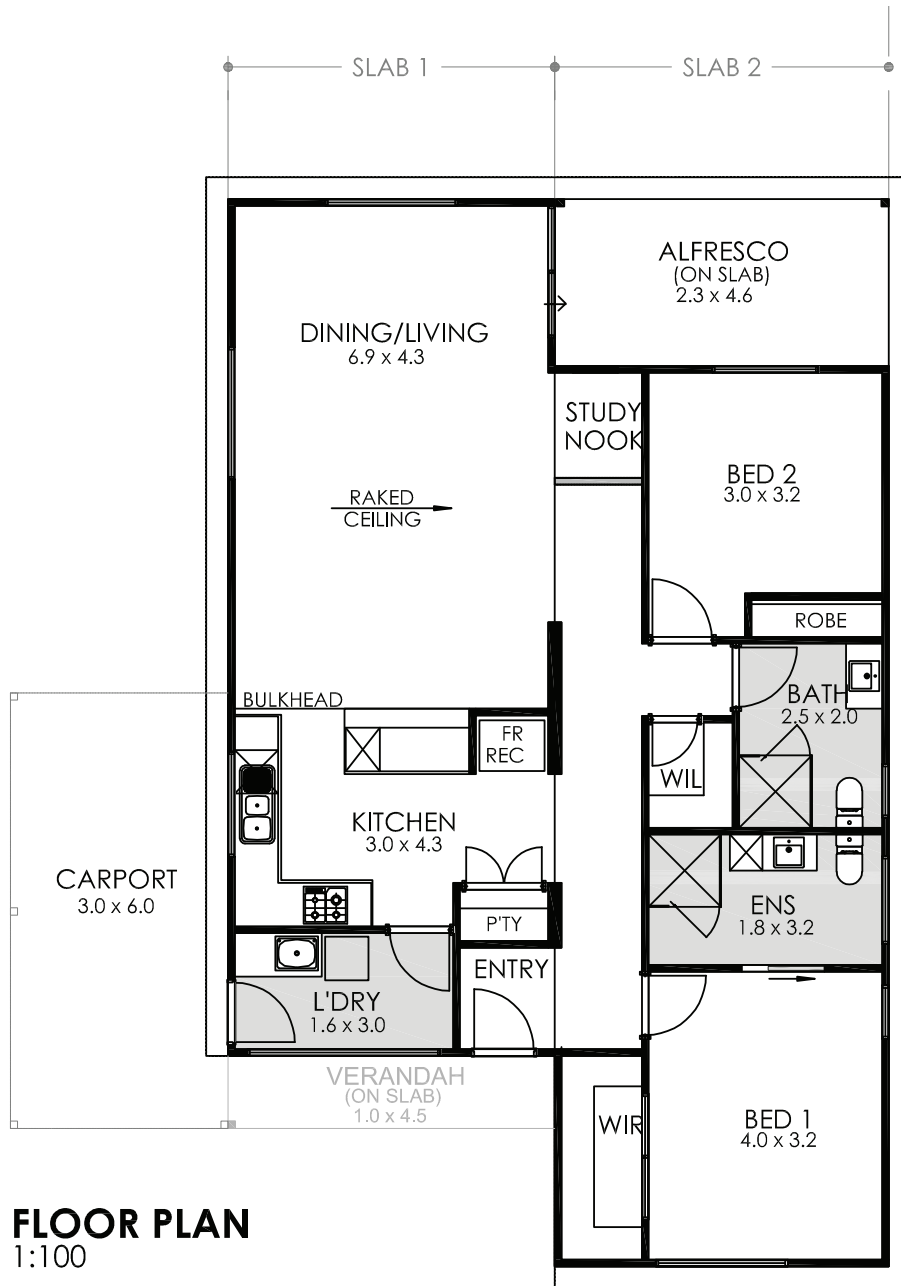
Office: 08 9920 4111 / Mobile: 0412 991 442

**FLEETWOOD**  
AUSTRALIA

[www.sunsetbeachvillage.com.au](http://www.sunsetbeachvillage.com.au)



**FRONT ELEVATION**  
1:100



**FLOOR PLAN**  
1:100

AREAS	
HOUSE AREA:	110.1m <sup>2</sup>
ALFRESCO:	10.6m <sup>2</sup>
CARPORT (OPTIONAL):	18.0m <sup>2</sup>
<b>TOTAL AREA:</b>	<b>138.7m<sup>2</sup></b>
SLAB 1 (L x W):	12.8m x 4.5m
SLAB 2 (L x W):	14.7m x 4.6m
<b>CEILING HEIGHTS @ 2410mm</b> UNLESS OTHERWISE NOTED	

